

PREWIRED ELECTRONIC CONTROL PANELS WITH MULTI-SIGNAL LIGHTS AND SWITCHES

*Provides Maximum Security
and Safety During
Operation of Peerless
Gas-Fired Boilers*



A microprocessor based centralized electronic control system, consisting of all Honeywell controls, from one up to six flame rectifier pilots, manual or spark ignited. The prewired panel is constructed of heavy gauge metal with a baked enamel finish. It is dust proof and has three external switches with four signal lights and 10 ampere fuse. One or two Honeywell RM7890 Flame Safeguards are mounted internally. These electronic systems are available with the Peerless Series 211A gas-fired boilers.

MSP-2239 PREWIRED PANEL

The MSP-2239 Panel is completely prewired, color-coded and consists of one (1) internally mounted RM7890 Flame Safeguard with alarm contacts, Q7800A subbase and terminal block. All terminals are clearly marked for ease of identification in wiring all field installed controls.



No. MSP-2239 PANEL
One RM7890 Flame Safeguard

A 10 ampere externally mounted fuse is included with "Power," "Control" and "Main Valve" switches.

Four (4) signal lights are furnished consisting of:

- 1 - "Power On" (Clear)
- 2 - "Pilot On" (Amber)
- 3 - "Main Valve On" (Green)
- 4 - "Flame Failure" (Red)

Refer to "Electronic Systems Selection Chart" on the reverse side on this sheet.

MSP-2327 PREWIRED PANEL

The MSP-2327 Panel is identical to the MSP-2239 Panel except that it is furnished with two (2) RM7890 Flame Safeguards with alarm contacts and Q7800A subbases.

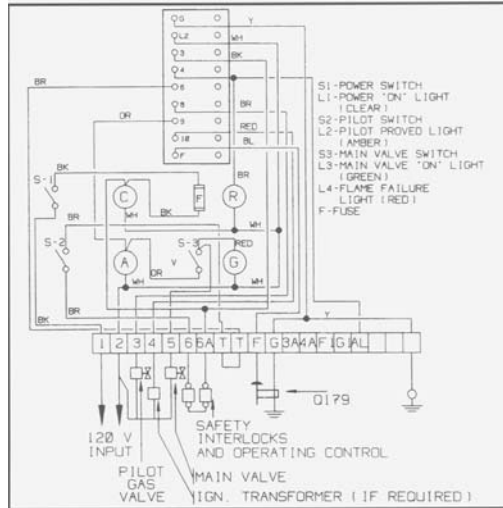
Refer to "Electronic Systems Selection Chart" on the reverse side on this sheet.



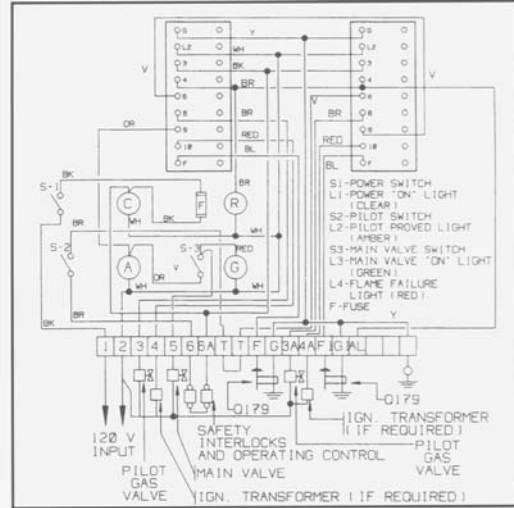
No. MSP-2327 PANEL
Two RM7890 Flame Safeguards



WIRING DIAGRAMS:



No. MSP-2239 PANEL
One RM7890 Flame Safeguard



No. MSP-2327 PANEL
Two RM7890 Flame Safeguards

ELECTRONIC SYSTEMS SELECTION CHART:

| ELECTRONIC CONTROL SYSTEMS | | | | | | | |
|----------------------------|----------------|----------------|--------------------------|----------------|--------------------------|----------------|----------------------------|
| BOILER MODEL NUMBER | E1-MP E1-EP | E2-MP E2-EP | E3-MP E3-EP | E4-MP E4-EP | E5-MP E5-EP | E6-MP E6-EP | NUMBER OF PILOTS FURNISHED |
| 211A-4 thru 211A-10 | X | | | | | | 1 |
| 211A-11 thru 211A-15 | X | X | | | | | 2 |
| 211A-16 thru 211A-25 | X | X | X | | | | 3 |
| 211A-26 thru 211A-33 | X | X | X | X | | | 4 |
| 211A-34 thru 211A-37 | X | X | X | X | X | | 5 |
| 211A-38 thru 211A-40 | N/A | X | X | X | X | | 5 |
| 211A-41 thru 211A-46 | N/A | X | X | X | X | X | 6 |
| MSP Panel(s) Required | (1) 2239 | (1) 2327 | (1) 2239 and (1) 2327 | (2) 2327 | (1) 2239 and (2) 2327 | (3) 2327 | |

NOTES

1. "M" in E1-MP, E2-MP systems, etc., designates manual ignition of pilot(s) (constant burning pilot).
2. "E" in E1-EP, E2-EP, systems, etc., designates electric ignition of pilot(s) (intermittent pilot).
3. Electronic systems are available without prewired panel(s). If panel(s) is not required, delete suffix "P" (E1-M, E1-E, E2-M, etc.).
4. Note that if, for example, a 211A-26 boiler with an E1-MP system were selected, one (1) pilot would be electronically supervised and three (3) would be thermally supervised constant burning pilots.



PeerlessBoilers.com

PB HEAT, LLC
NEW BERLINVILLE, PA 19545-0447