



PeerlessBoilers.com

PEERLESS STATUS PANEL TROUBLESHOOTING GUIDE

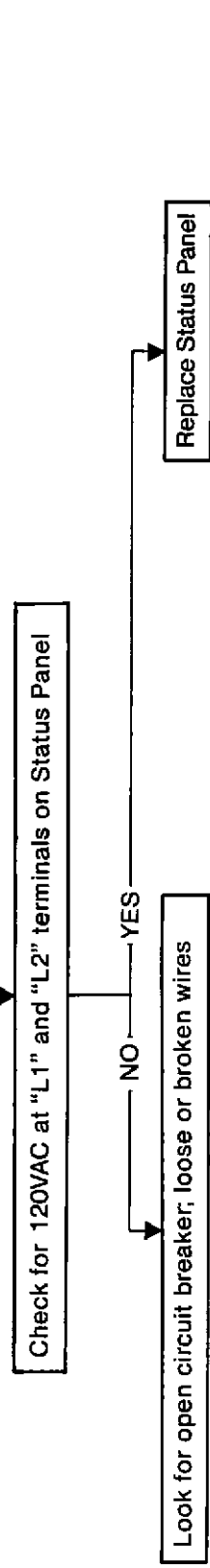
IF BOILER IS NOT OPERATING, USE THE FOLLOWING GUIDE IN CONJUNCTION WITH THE STATUS PANEL, TO AID IN LOCATING THE CAUSE OF FAILURE.

- BEFORE BEGINNING TROUBLESHOOTING THE BOILER REFER TO THE SERIES PDE INSTALLATION INSTRUCTIONS TO BECOME FAMILIAR WITH THE CONTROLS, BOILER SEQUENCE OF OPERATIONS AND WIRING OF CONTROL SYSTEM.
- PRESS THE TEST SWITCH LOCATED ON THE LEFT JACKET PANEL AND NOTE IF ALL 24VAC LIGHTS ARE FUNCTIONAL.
- ADJUST THERMOSTAT TO CALL FOR HEAT AND OBSERVE WHICH LIGHT IS THE FIRST ONE ON STATUS PANEL THAT IS OFF AND THEN PROCEED TO THE APPROPRIATE POINT IN THIS GUIDE.

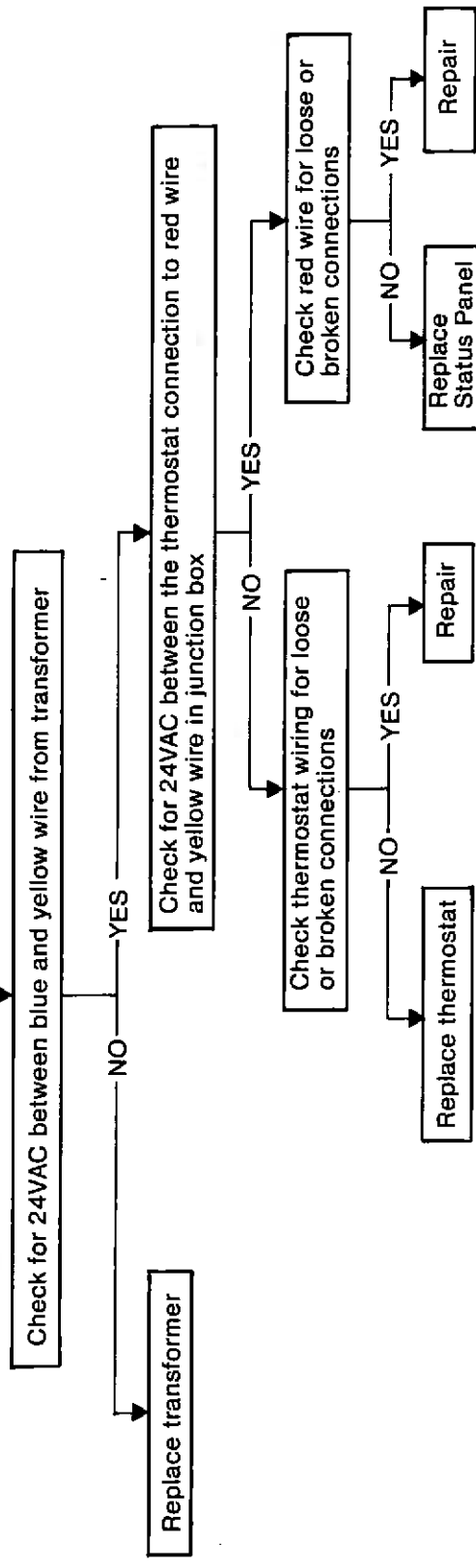
NOTE: LINE VOLTAGE IS AVAILABLE TO THE STATUS PANEL L1 AND L2 ¼" SPADE TERMINALS AT ALL TIMES. BEFORE REMOVING OR HANDLING STATUS PANEL, DISCONNECT ELECTRIC POWER TO BOILER AT MAIN FUSE OR CIRCUIT BREAKER.

PEERLESS BOILERS

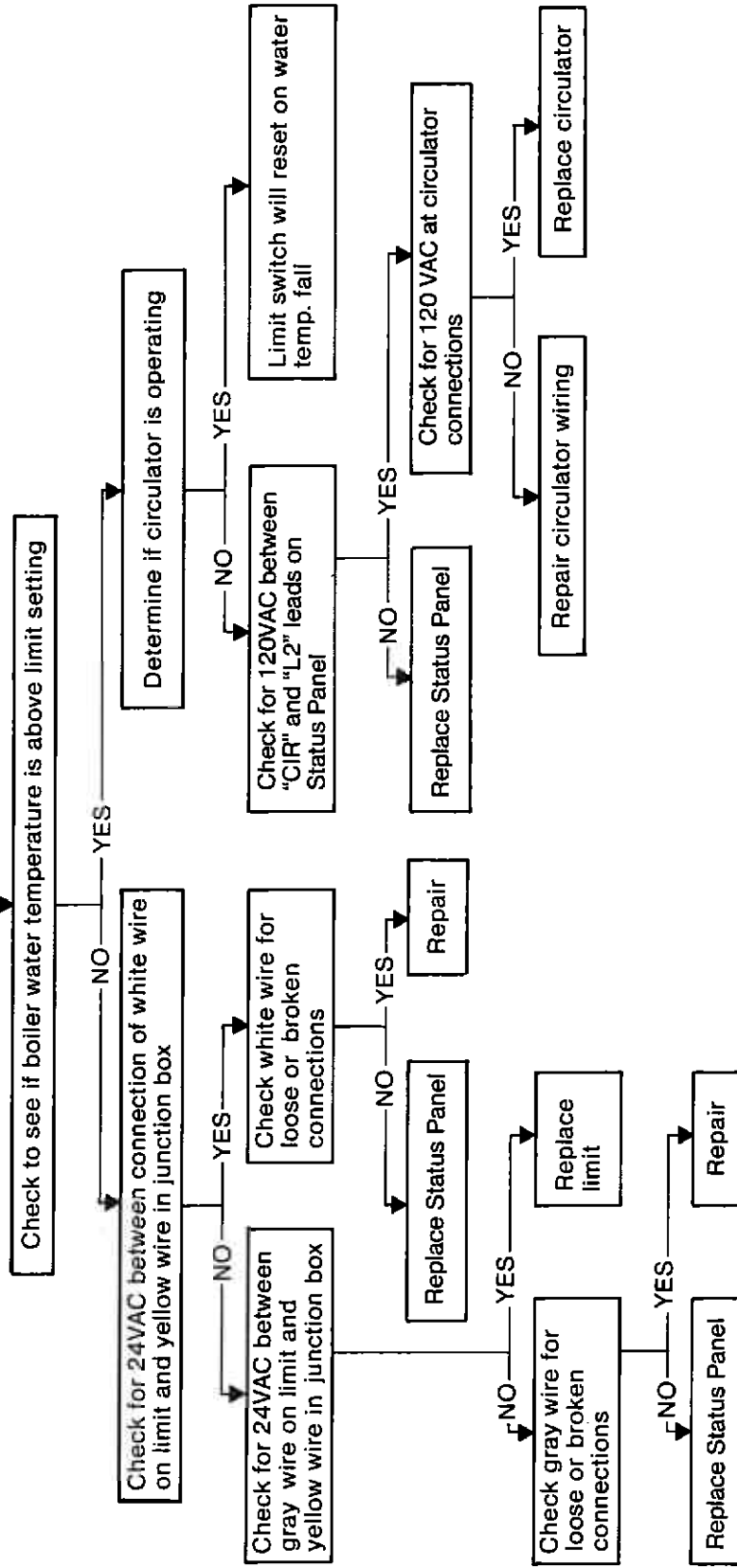
1- "PWR" (POWER) LIGHT OFF



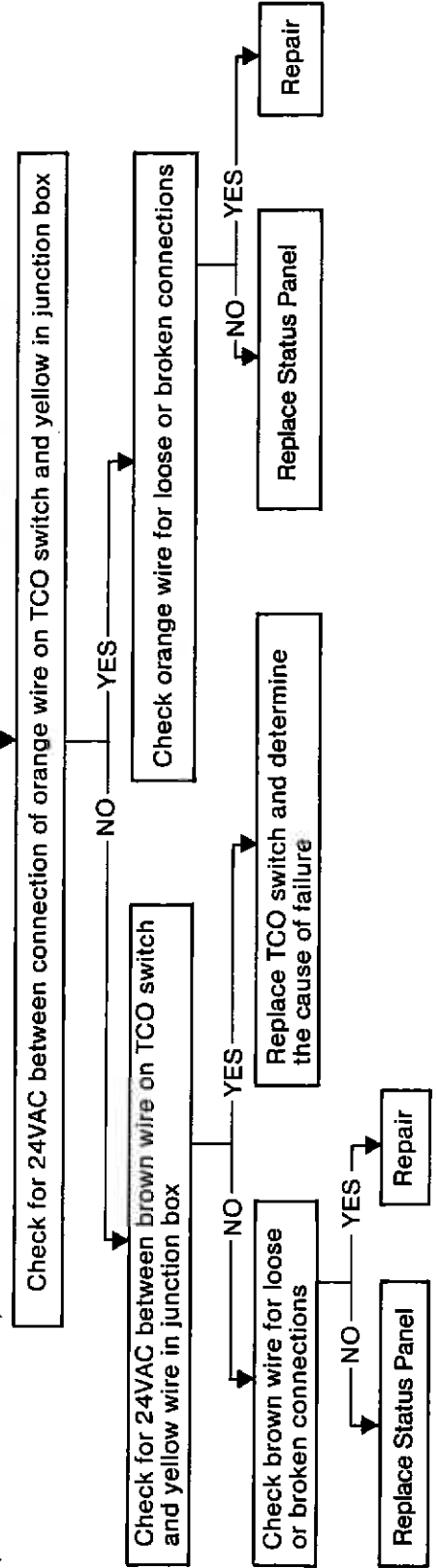
2- "T,STAT" (THERMOSTAT) LIGHT OFF



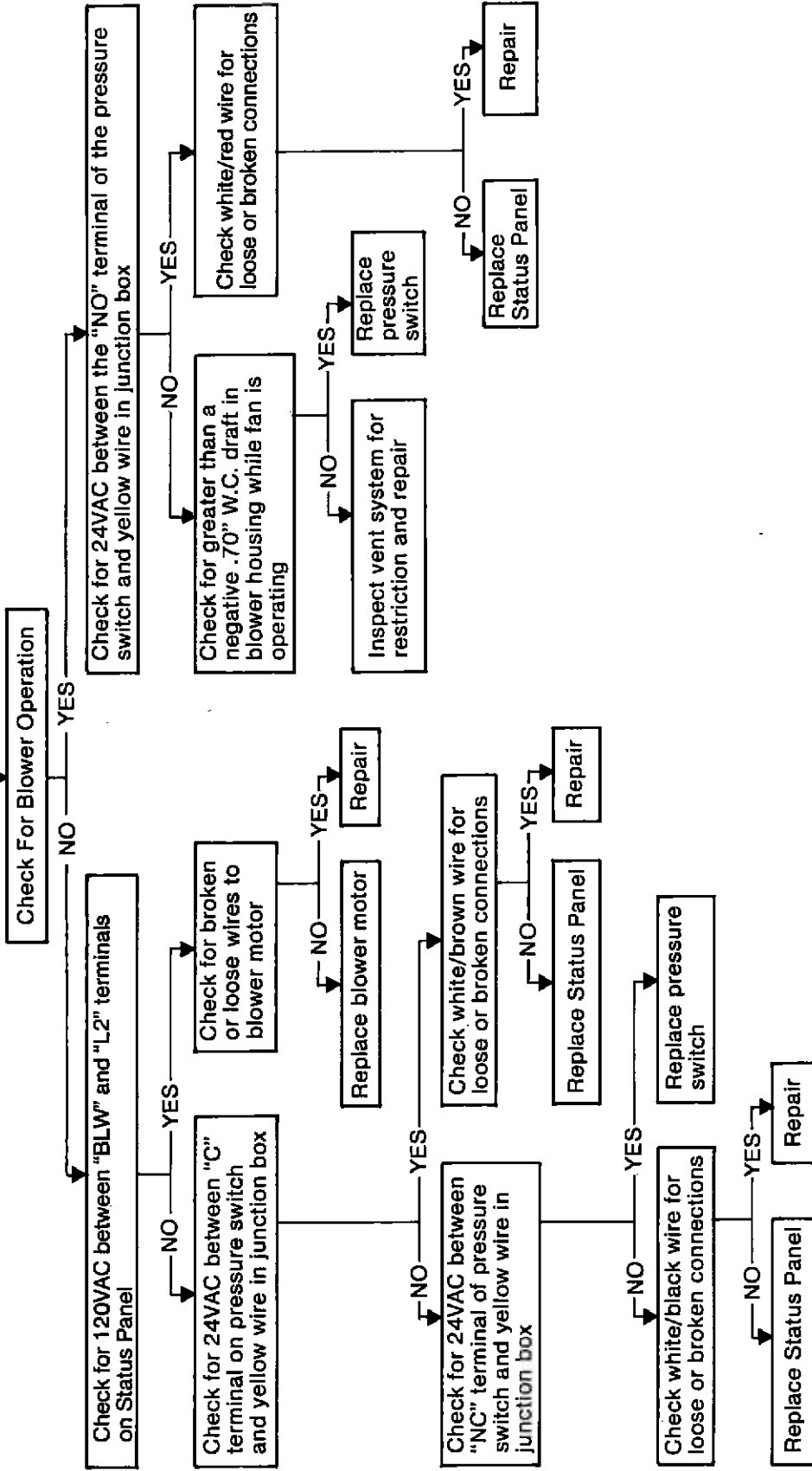
3- "H, LMT" (HIGH LIMIT) LIGHT OFF



4- "TCO" (THERMAL CUT OFF) LIGHT OFF



5- "PS" (PRESSURE SWITCH) LIGHT IS OFF



6- "MV" (MAIN VALVE) LIGHT IS OFF

