

Series CC™

Commercial Boiler Available with Tankless Coils



Standard Equipment

- High Efficiency Power Burners
- Front and Rear Observation Port
- Hi-Temp Port Seals
- Insulated Enameled Steel Jacket
- Cast Iron Flue Collector with Integral Damper
- Manual Reset, Limit Control

Series CC™ Boiler Features

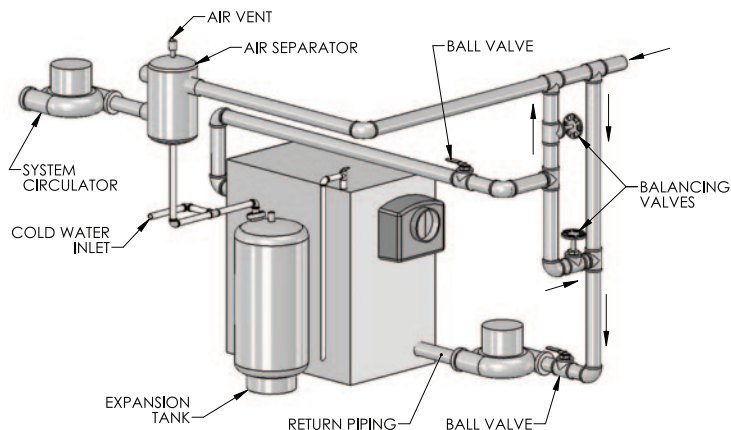
- Side-mounted Tankless 9 GPM Coils – for Quick and Easy Visual Inspection and Service
- Constructed of Rugged, Cast Iron, Wet-Base Sections, Tested for 80 psi
- Oil, Gas or Combination Gas/Oil-fired for Hot Water or Steam Systems
- 10 Sizes, 3–12 Sections—Ideal for Commercial Applications
- Forced Draft Firing for the Highest Possible Efficiencies

Optional Equipment

- Heater Cover Plates
- Assembled Sections
- Packaged
- Low Water Cut-off
- Feeder and Pump Controllers
- Inspection Taps and Brass Plugs (Up to Three per Section)
- Tankless Water Heaters
- 80 psi Pressure Relief Valve (Water Boilers)

All commercial cast iron boilers include a full one-year warranty. A limited, ten-year warranty is provided on the cast iron sections for all commercial hot water and steam boilers. Visit PeerlessBoilers.com for complete details.

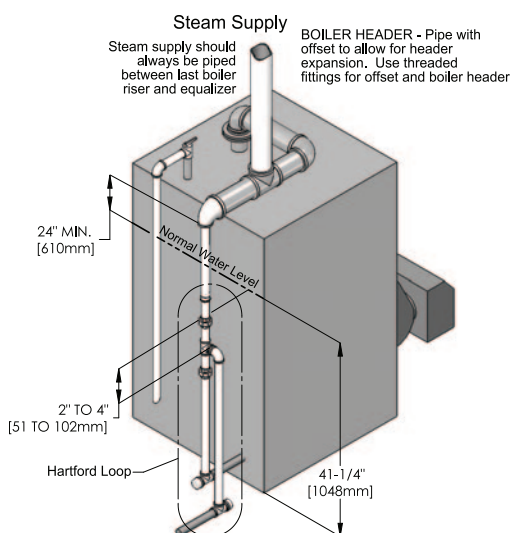
Water Piping



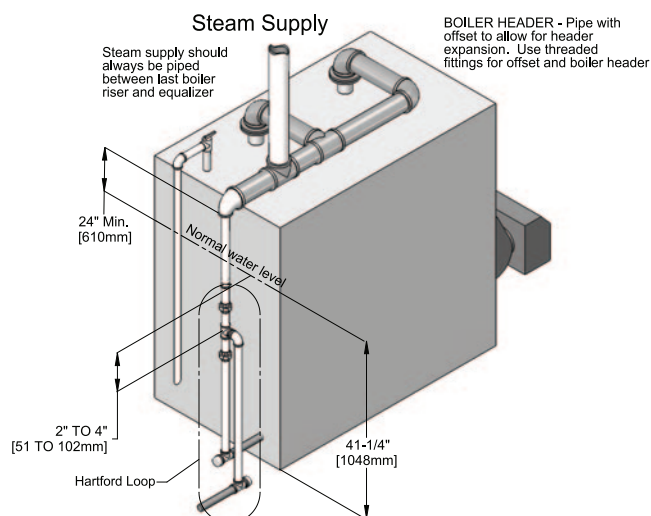
Boiler Piping (Water)

Boiler Model Number	Gross Output (MBH)	Flow Rate @20 F Rise (GPM)	Recommended	
			Supply Size (NPT)	Return Size (NPT)
CC-03	308	31	2"	2"
CC-04	421	42	2"	2"
CC-05	587	59	2 1/2"	2 1/2"
CC-06	762	76	3"	3"
CC-07	924	92	3"	3"
CC-08	1087	109	3"	3"
CC-09	1262	126	3"	3"
CC-10	1424	142	3"	3"
CC-11	1587	159	4"	3"
CC-12	1750	175	4"	3"

Steam Piping



FOR BOILERS WITH ONE RISER



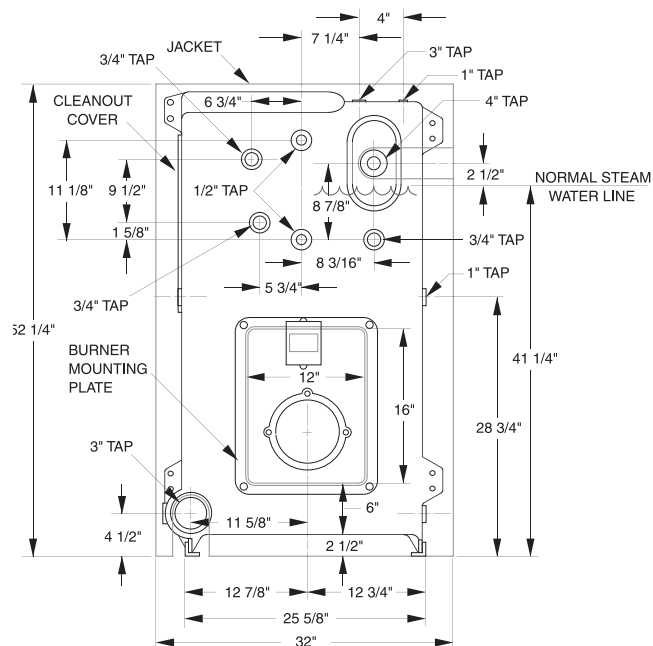
FOR BOILERS WITH TWO RISERS

Boiler Piping (Steam)

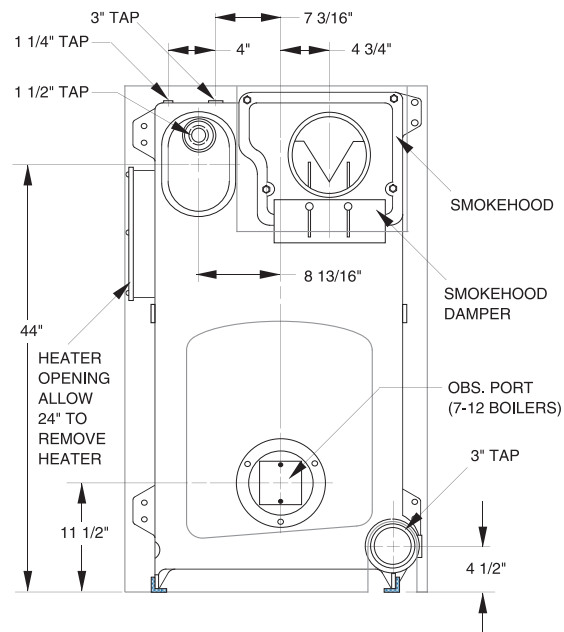
Boiler Model Number	Number of 3" NPT Risers	Header Size (NPT)	Equalizer Size (NPT)
CC-03 to CC-05	1	3"	1-1/2"
CC-06 to CC-10	2	4"	2"
CC-11 & CC-12	2	5"	2-1/2"

Burner Specifications

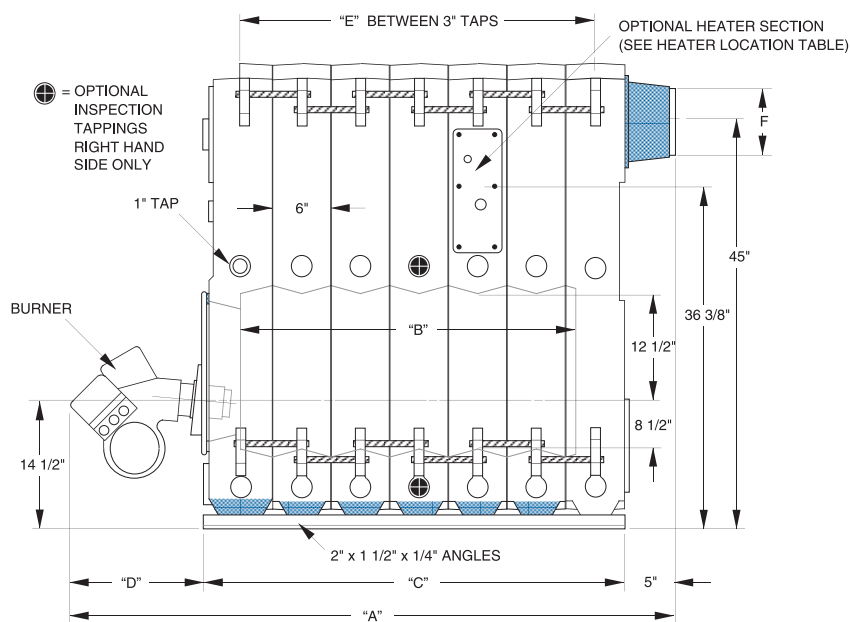
Boiler Model Number	Burners – Light Oil						Burners – Gas		Burners – Gas/Oil	
	Beckett		Carlin		Power Flame		Power Flame		Power Flame	
	Model No.	H.P.	Model No.	H.P.	Model No.	H.P.	Model No.	H.P.	Model No.	H.P.
CC-03	CF500	1/3	201CRD	1/4	–	–	JR15A	1/4	–	–
CC-04	CF500	1/3	301CRD	1/4	CR1-0	1/3	JR15A	1/4	CR1-GO	1/3
CC-05	CF800	1/3	301CRD	1/4	CR1-0	1/3	JR30A	1/3	CR1-GO	1/3
CC-06	CF1400	1/2	702CRD	1/2	CR1-0	1/2	JR30A	1/3	CR1-GO	1/2
CC-07	CF1400	1/2	702CRD	1/2	CR2-0	3/4	JR30A	1/3	CR2-GO	3/4
CC-08	N/A	N/A	702CRD	1/2	CR2-0	3/4	JR50A	1/3	CR2-GO	3/4
CC-09	CF2300	3/4	702CRD	1/2	CR2-0	3/4	JR50A	1/3	CR2-GO	3/4
CC-10	CF2300	3/4	801CRD	3/4	CR2-0	3/4	JR50A	1/2	CR2-GO	3/4
CC-11	CF2500	2	801CRD	3/4	CR2-0	1	CR2G	1	CR2-GO	1
CC-12	CF2500	2	801CRD	3/4	CR2-0	1-1/2	CR2G	1-1/2	CR2-GO	1-1/2



FRONT VIEW



REAR VIEW



SIDE VIEW

Boiler Dimensions

Boiler Model Number	Overall Length - "A" (inch)				Firebox Length "B" (inch)	Boiler Length "C" (inch)	Burner Length "D" (inch)				Riser Tapping Location "E" (inch) ¹	Diameter of Vent Connector "F" (inch)
	Carlin	Power Flame/J	Power Flame/C	Beckett Oil			Carlin	Power Flame/J	Power Flame/C	Beckett Oil		
CC-03	39	44	N/A	31	9	18	16	21	N/A	13	12	7
CC-04	45	50	59	37	15	24	16	21	30	13	18	7
CC-05	51	56	65	43	21	30	16	21	30	13	24	8
CC-06	61	62	71	49	27	36	20	21	30	13	30	8
CC-07	67	68	82	64	33	42	20	21	35	22	36	9
CC-08	73	74	88	N/A	39	48	20	21	35	23	42	10
CC-09	79	80	94	77	45	54	20	21	35	23	48	10
CC-10	87	86	100	83	51	60	22	21	35	23	54	10
CC-11	93	N/A	106	89	57	66	22	N/A	35	23	60	12 ²
CC-12	99	N/A	112	99	63	72	22	N/A	35	27	66	12 ²

Notes: 1. Dimensions between risers are approximate.

2. Models CC-11 and CC-12 use a 10"(254mm) to 12" (305mm) flue adapter.

Tankless Heater Location

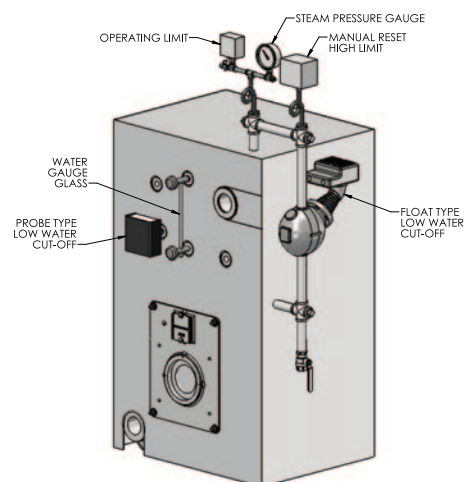
[illegible]

F = Front Section

P = Plain Intermediate Section

H = Heater Intermediate Section -
Optional, must be ordered.

B = Back Section

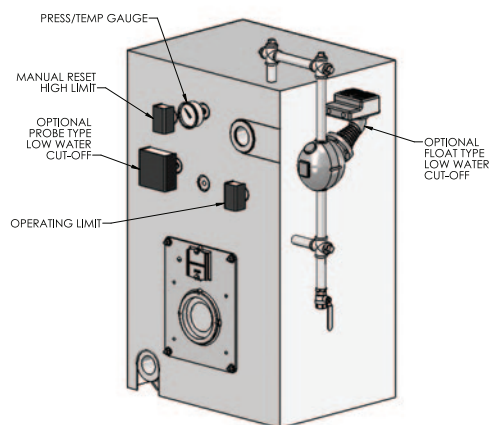


CONTROL LOCATIONS (Steam Boiler)

Side-Mounted Tankless Heater Capacities


Number Of Sections	Gross Output (MBH)	Cont. Draw (GPM)		
		One Heater	Two Heater	Three Heater
3	308	8.5	N/A	N/A
4	421	8.5	N/A	N/A
5	587	9.0	10.6	N/A
6	762	9.0	12.9	N/A
7	924	9.0	15.3	N/A
8	1087	9.0	17.6	N/A
9	1262	9.0	18.0	19.9
10	1424	9.0	18.0	22.2
11	1587	9.0	18.0	24.6
12	1750	9.0	18.0	26.9

Note: Heater ratings based on 100° F. temperature rise, 200° F. boiler water, 9 GPM at 9.5 psi Ø P.
For 180° boiler water ratings, consult factory.



CONTROL LOCATIONS (Water Boiler)

Boiler Ratings

Series CC™																
Boiler Model Number	Oil Input		Gas Input MBH	Gross Output MBH	NET			Oil Thermal Effy	Gas Thermal Effy							
	GPH	MBH			sqft	MBH	Water MBH									
CC-03	2.6	364	375	308	963	231	268	84.6	82.1	9.2	33	38	2.12	1716	23.9	
CC-04	3.6	504	520	421	1316	316	366	84.1	81.5	12.5	41	49	3.50	2122	35.8	
CC-05	5.0	700	722	587	1825	441	510	83.9	81.3	17.5	49	59	4.88	2528	47.7	
CC-06	6.5	910	938	762	2382	572	663	83.7	81.2	22.8	56	70	6.27	2933	59.7	
CC-07	7.9	1106	1140	924	2888	694	803	83.5	81.1	27.6	64	80	7.65	3339	71.6	
CC-08	9.3	1302	1342	1087	3398	815	945	83.5	81.0	32.5	72	91	9.04	3745	83.5	
CC-09	10.8	1512	1559	1262	3947	947	1097	83.5	83.5	37.7	80	102	10.42	4150	95.4	
CC-10	12.2	1708	1761	1424	4506	1081	1238	83.4	83.4	42.5	88	112	11.81	4555	107.4	
CC-11	13.6	1904	1963	1587	5071	1217	1380	83.4	83.4	47.4	96	123	13.20	4960	119.3	
CC-12	15.0	2100	2165	1750	5635	1352	1522	83.4	83.4	52.3	104	133	14.58	5366	131.2	

Notes: 1. Net Ratings are based on an allowance of 1.15 for Water Boilers. Net Ratings for steam boilers are based on a pick-up factor of 1.333.
2. Burner oil input based on Commercial Standard #2 fuel oil with a heating value of 140,000 BTU/Gal.
3. Burner natural gas input based on natural gas with a heating value of 1,000 BTU/Cu. Ft. and a specific gravity of 0.60.



PeerlessBoilers.com