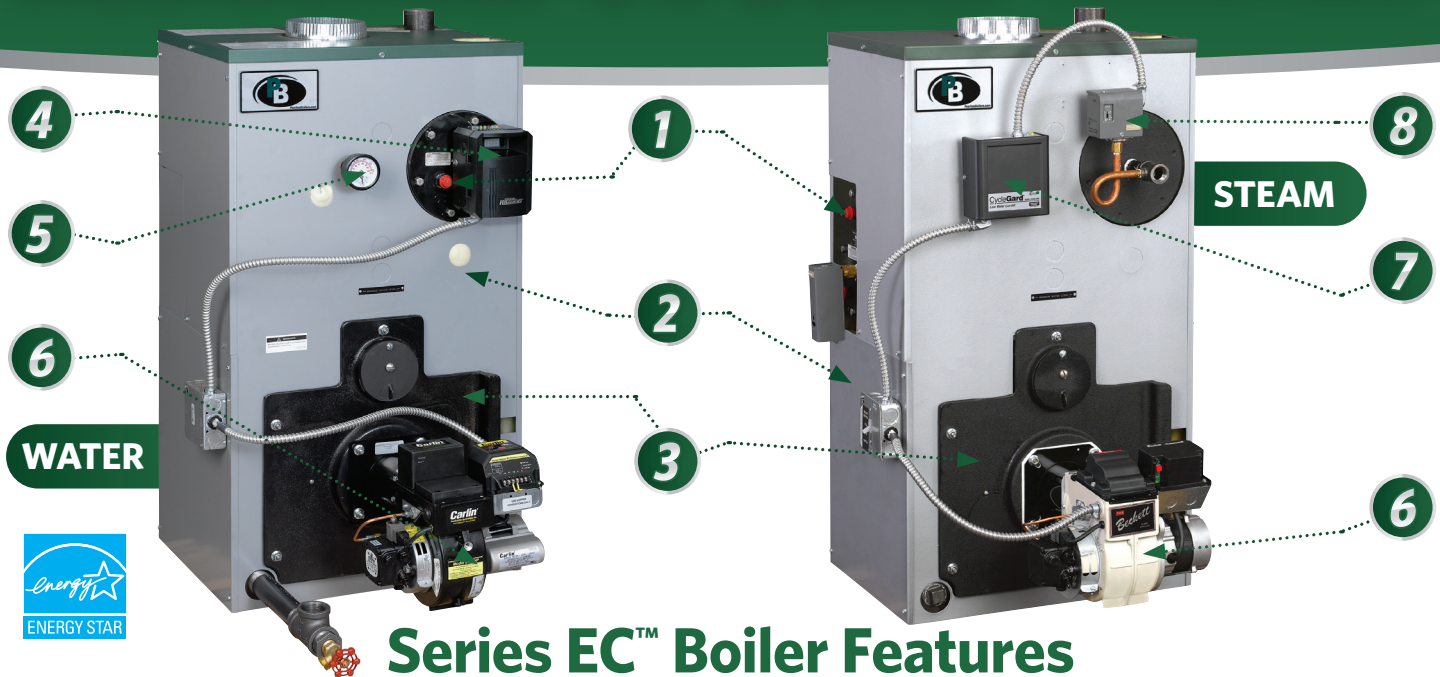


Peerless® Boilers



PeerlessBoilers.com

Series EC™ Residential Oil Boiler with Optional Tankless Heater



Series EC™ Boiler Features

- ✓ **Up to 87.6% AFUE - ENERGY STAR® Certified!*** *certain firing rates
- ✓ **Natural Draft (Chimney) Venting**
- ✓ **High Efficiency, Flame Retention Burners**
Choice of Beckett, Carlin or Riello ⑥
- ✓ **Certified for Biodiesel Fuel Blends up to 20% (B20)**
- ✓ **9 Sizes Available (3-6 sections)**
Packaged or Knockdown Boilers
- ✓ **Cast Iron Sections**
Factory Tested and Assembled with Steel Push Nipples
- ✓ **Large Water Content, Wet Base Section Design**
Ideal for Steam and Large Volume Hot Water Applications
- ✓ **Insulated, Deluxe Powder Coated Steel Jacket**
Reduces Boiler Heat Loss ②
- ✓ **Full Plate Swing-Out Door**
For Quick and Easy Cleaning ③
- ✓ **Optional Tankless Coils for Domestic Hot Water ①**

Standard Equipment

**Certain models

- | | | |
|---|--|--|
| WATER <ul style="list-style-type: none">✓ Boiler Reset Control with Low Water Cut-off (HydroStat 3250) for Increased Efficiency and Safety ④✓ Taco Circulator**✓ Temperature-Pressure Gauge ⑤ | STEAM <ul style="list-style-type: none">✓ Probe Type LWCO** ⑦✓ Pressure Control ⑧✓ Skim Tapping✓ Pressure Gauge✓ Barometric Draft Damper** | <ul style="list-style-type: none">✓ Drain Valve✓ Service Switch** |
|---|--|--|

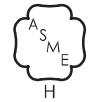
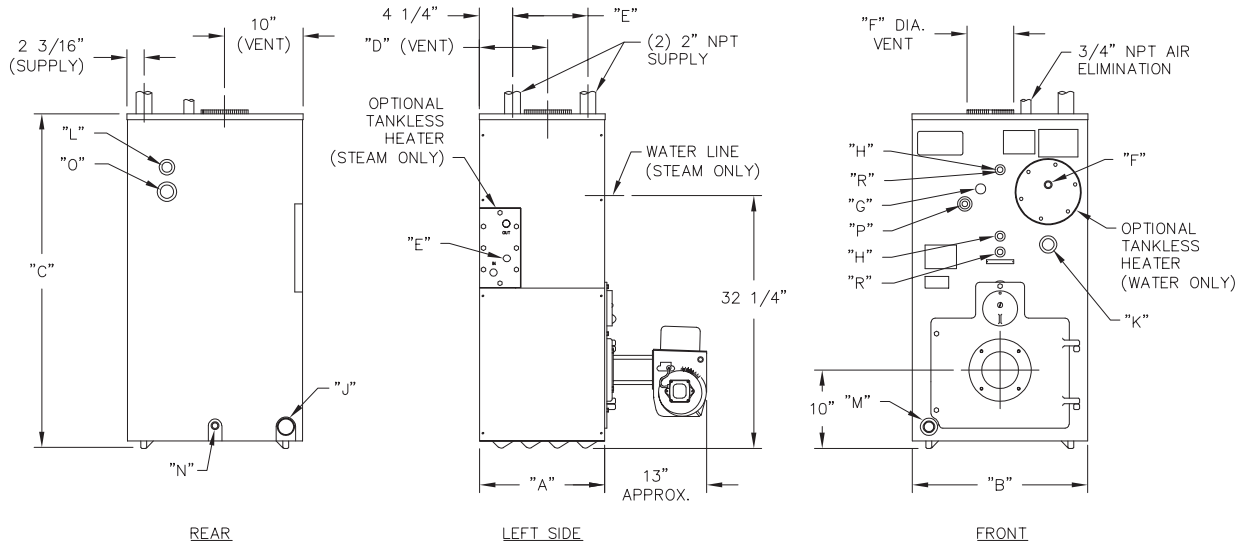
LIMITED LIFETIME WARRANTY

All residential cast iron boilers include a full one-year warranty. A limited, lifetime warranty is provided for the cast iron sections of Peerless® residential hot water boilers. A limited, ten-year warranty is provided on the cast iron sections of residential steam boilers. Visit PeerlessBoilers.com for complete details.



**SCAN FOR
SERIES EC™
PRODUCT INFO**

Technical Information



BOILER DIMENSIONS

Boiler Model Number	Jacket Depth "A"	Jacket Width "B"	Jacket Height "C"	Rear of Jacket to c/l of Vent "D"	Distance Between Supply Tappings "E"	Vent Size "F" Dia.
EC(T)-e-03	15-3/4"	22-1/2"	42"	8-3/4"	9-1/16"	6"
EC(T)-e-04	19-15/16"	22-1/2"	42"	10-7/8"	13-1/4"	7"
EC(T)-e-05/05	24-1/8"	22-1/2"	42"	13"	17-7/16"	8"
EC(T)-e-06/06	28-5/16"	22-1/2"	42"	15-1/16"	21-5/8"	9"

TAPPING LOCATIONS

LWCO = Low Water Cut-off

Location	Size NPT	Steam	Water
E	3/4"	Low Limit Control	N/A
F	3/4"	Pressure Gauge	Limit Control
G	1/4"	N/A	Temperature-Pressure Gauge
H	1/2"	Gauge Glass and Float LWCO	N/A
J	2"	Return	Alternate Return
K	3/4"	Secondary Probe LWCO	N/A
L	3/4"	Safety Valve	Safety Relief Valve
M	1-1/4"	N/A	Return
N	3/4"	Drain Valve	Drain Valve
O	1-1/2"	Skim Tapping	Optional High Limit
P	3/4"	Primary Probe LWCO	N/A
R	1/2"	Gauge Glass for Primary Probe LWCO	N/A

SERIES EC™ BOILER RATINGS



Boiler Model Number	Input		Output ^{3,4} MBH		B2O Input	B2O Output MBH		Net Ratings ²			AFUE ³ , %		Therm. Eff. ⁴ %	Comb. Eff. %	gal		Stack Draft Required
	GPH ¹	MBH	Water	Steam	MBH	Water	Steam	Steam Sq. Ft.	Steam, MBH	Water, MBH	Water	Steam			Water	Steam	
EC(T)-e-03-075	0.75	105	93	92	101	85	84	288	69	81	87.6*	86.5	-	-	17.40	14.16	-.03
EC(T)-e-03-100	1.00	140	122	121	135	109	108	379	91	106	86.5	85.5	-	-	17.40	14.16	-.04
EC(T)-e-04-125	1.25	175	153	152	169	139	138	475	114	133	86.5	85.4	-	-	21.72	17.28	-.03
EC(T)-e-04-150	1.50	210	183	181	203	170	168	567	136	159	86.3	85.5	-	-	21.72	17.28	-.04
EC(T)-e-05-175	1.75	245	215	213	237	201	199	667	160	187	86.8	85.5	-	-	26.04	20.40	-.03
EC(T)-e-05-200	2.00	280	243	242	271	232	231	758	182	211	86.2	85.0	-	-	26.04	20.40	-.04
EC(T)-05-250=	2.40	336	279	279	325	267	267	874	210	243	-	-	83.0	85.1	26.04	20.40	-.05
EC(T)-e-06-220=	2.20	308	-	259	298	-	247	811	194	-	-	-	84.0	-	-	23.52	-.04
EC(T)-e-06-240=	2.40	336	-	282	325	-	267	883	212	-	-	-	84.0	-	-	23.52	-.04
EC(T)-06-275=	2.75	385	321	321	372	305	303	1006	241	279	-	-	83.3	84.4	30.36	23.52	-.04
EC(T)-06-300=	3.00	420	347	347	406	329	329	1087	261	302	-	-	82.5	83.7	30.36	23.52	-.05

NOTE: all values are for Type #2 oil unless noted as B2O.

* As an ENERGY STAR® Partner, PB Heat, LLC has determined that these firing rates meet the ENERGY STAR® guidelines for energy efficiency.

= All chimneys are 8" x 8" x 20' except those models denoted with (-), which are 8" x 12" x 20'.

1 Burner input based on No. 2 fuel oil with a heating value of 140,000 Btu per gallon.

2 Net water ratings based on an allowance of 1.15, net steam ratings based on an allowance of 1.333. Consult Factory before selecting a boiler for installations having unusual piping and pickup requirements, such as intermittent system operation, extensive piping systems, etc.

3 Output is Heating Capacity for models with inputs <300 MBH and Gross Output for models with inputs ≥300 MBH. Heating Capacity and Annual Fuel Utilization Efficiency (AFUE) ratings are based on U.S. Government tests.

4 Thermal efficiency and gross output are determined in accordance with ANSI/AHRI Standard 1500.



PeerlessBoilers.com

CUT-EC R10 (8/25-1M)

Printed in U.S.A.

©2025 PB Heat, LLC. All rights reserved



SCAN FOR
SERIES EC™
PRODUCT INFO