

Peerless® Boilers



PeerlessBoilers.com

Peerless® PureFire® 625 & 750 High Efficiency Condensing Commercial Gas Boilers

Check out our entire line of PureFire® sizes ranging from 50 MBH to 4,000 MBH!

Features and Benefits



- ✓ **Up to 98.0% Thermal Efficiency**
- ✓ **Low Pressure Drop Through Stainless Steel Heat Exchanger**
Reduces Pump Requirements
- ✓ **Direct-vent/Sealed Combustion or Indoor Air**
- ✓ **Environmentally Friendly**
LoNOx Operation
- ✓ **Cascade Capable** - up to 8 Boilers
- ✓ **Five Year Parts and One Year Labor Warranty Included with Every Boiler!***

*boiler and installer must be registered for warranty to take effect



**SCAN FOR
PUREFIRE®
PRODUCT INFO**



Standard Equipment

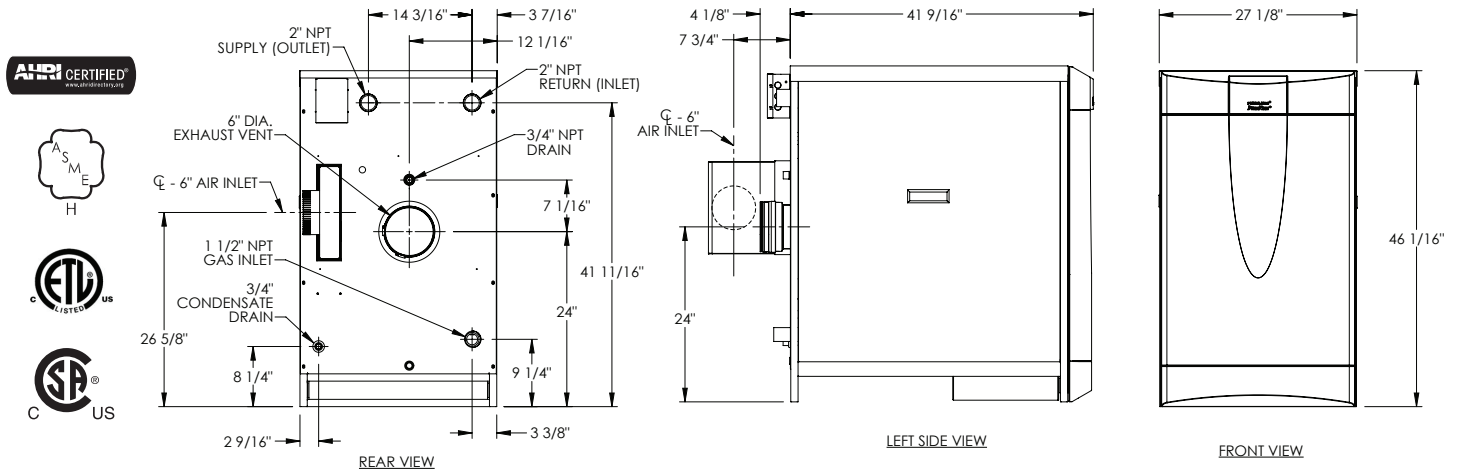
- ✓ **Built-in LWCO with Manual Reset for CSD-1 Compliance**
- ✓ **Fully Modulating Burner with Maximum 5 to 1 Turndown**
- ✓ **MODBUS Communications**
- ✓ **Drop-down Control Panel for Easy Wiring Access**
- ✓ **Rear Connections**
- ✓ **Domestic Hot Water Priority**
- ✓ **Combustion Air Filter and Air Proving Switch**
- ✓ **30 psi Relief Valve**
- ✓ **High Temperature Vent and Door Limit Switch**

PeerlessBoilers.com

WARRANTY

Visit PeerlessBoilers.com for complete details on standard and extended warranty programs available.

Technical Information



Peerless® PureFire® PFC-625 & PFC-750 BOILER RATINGS



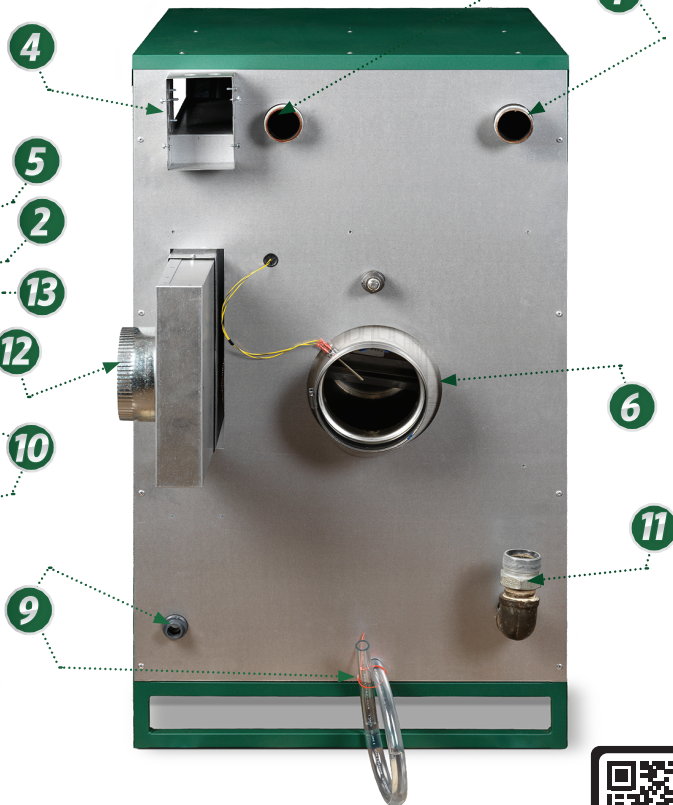
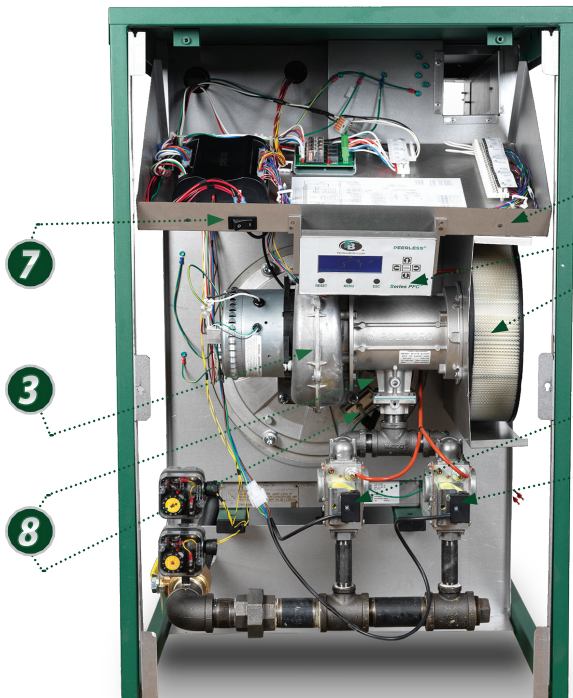
Boiler Model	Input				Gross Output ²		Net Water Ratings ¹		Thermal Efficiency %
	Minimum MBH	Minimum kW	Maximum MBH	Maximum kW	MBH	kW	MBH	kW	
PFC-625	125	36.6	625	183.2	612	179.4	532.2	156	97.9
PFC-750	150	43.9	750	219.8	735	215.4	639.1	187.3	98.0

Note: Consult factory before selecting a boiler for installations with unusual piping and/or pickup requirements, such as intermittent system operation, extensive pipe system, etc.

1. Net water ratings are based on a piping an pickup allowance of 1.15

2. Gross Output and Thermal Efficiency are based on testing in accordance with ANSI/AHRI STANDARD 1500 - 2015 TESTING STANDARD FOR PERFORMANCE RATING OF COMMERCIAL SPACE HEATING BOILERS and are 3rd Party verified.

- 1 Supply/Return Pipes
- 2 Multi-language LCD Display
- 3 Blower
- 4 120V Service Entrance
- 5 Drop-down Control Panel
- 6 Rear Vent Connection
- 7 Service Switch
- 8 Reliable Dual Flame Sensors
- 9 Condensate System
- 10 Gas Valves
- 11 Gas Inlet
- 12 Air Inlet
- 13 Air Inlet Filter



PeerlessBoilers.com

CUT-625/750 R2 (8/25 - 1M)

Printed in U.S.A.

© 2025 PB Heat LLC. All rights reserved.



SCAN FOR
PUREFIRE®
PRODUCT INFO