

# Peerless® Boilers

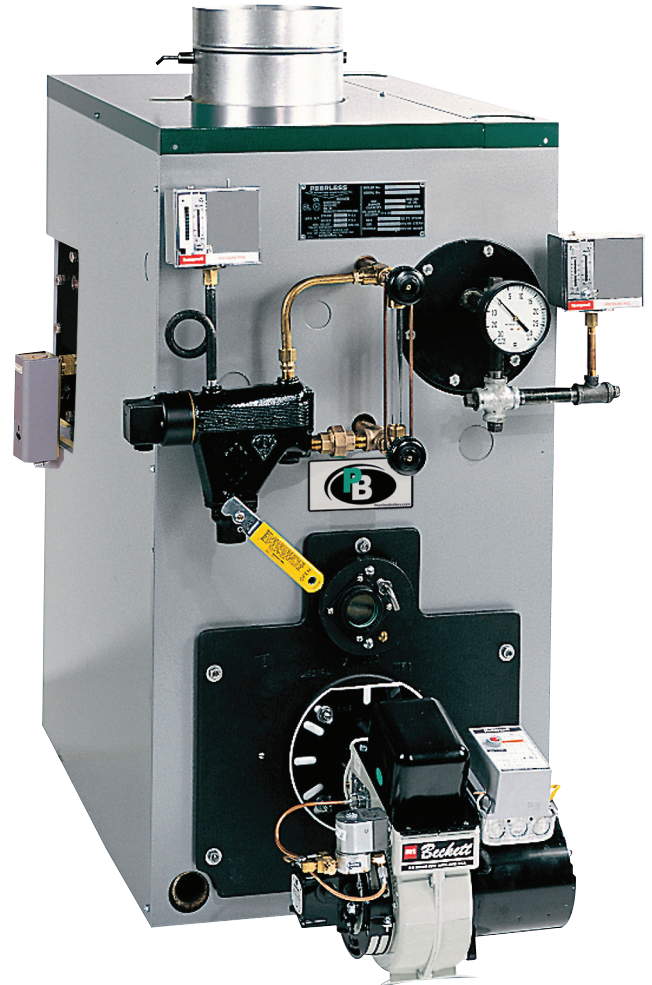


PeerlessBoilers.com

## Series SC™ Semi-Commercial Boilers with Optional Tankless Heater

### Series SC™ Boiler Features

- ✓ Semi-Commercial, Oil, Gas or Combination Gas/Oil-fired Boilers
- ✓ Certified for Biodiesel Fuel Blends up to 20% (B20)
- ✓ Constructed of Rugged, Cast Iron, Wet-Base Sections
- ✓ 6 Sizes, 5-10 Sections for Hot Water or Steam Systems
- ✓ Forced Draft Venting Requires Only a Three-Foot Vent Above the Roof
- ✓ Meets and/or Exceeds the ASHRAE 90.1 Minimum as Required by the Federal Standards for Commercial Boilers



### Standard Equipment

- ✓ High Efficiency Power Burners\*
- ✓ Honeywell Operating Controls
- ✓ Manual Reset High Limit Control
- ✓ Low Water Cutoff on Packaged Boilers
- ✓ Top Flue Outlet—Includes Locking Damper
- ✓ Steel Push Nipples—Provides a Water-tight Seal Between Sections
- ✓ Deluxe Insulated Enameled Steel Jacket
- ✓ Optional Tankless Coils—For Domestic Hot Water

\*Choice of Beckett, Carlin, or Power Flame

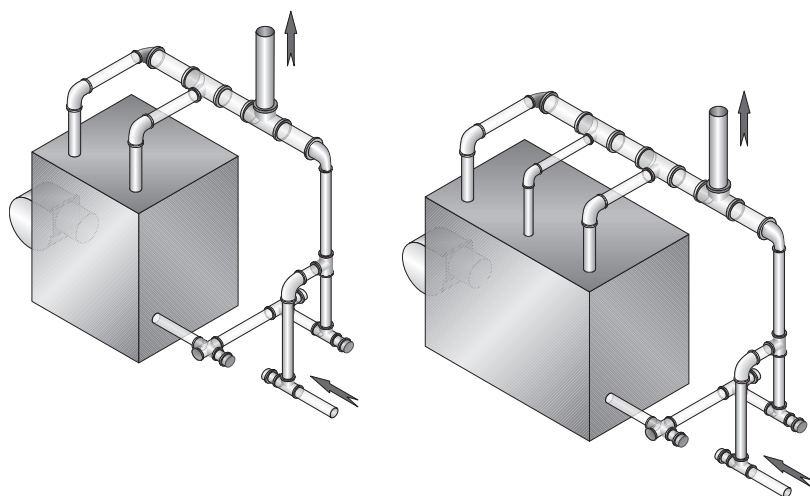


**SCAN FOR  
SERIES SC™  
PRODUCT INFO**

**LIMITED  
10-YEAR WARRANTY**

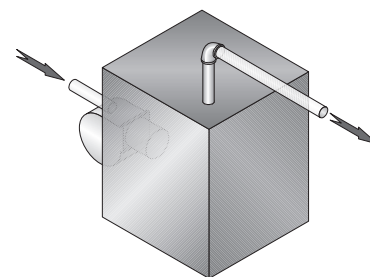
All commercial cast iron boilers include a full one-year warranty. A limited, ten-year warranty is provided on the cast iron sections for all commercial hot water and steam boilers. Visit [PeerlessBoilers.com](http://PeerlessBoilers.com) for complete details.

## STEAM PIPING



The return from the system should always enter equalizer through Hartford Loop, 2" to 4" below water line.

## WATER PIPING



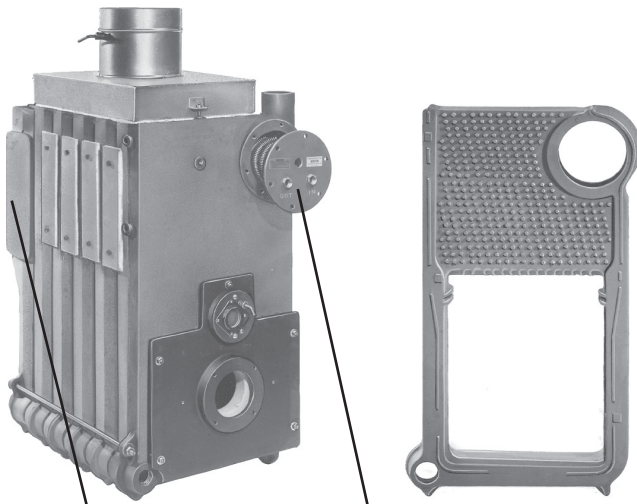
The supply and return connections should be sized to suit the system. The supply should be piped out of the top of the back section and the return piped to the bottom of the front section. There is a 3/4" tapping in the top of the back section for air elimination.

## BOILER PIPING

Boiler Model Number	Risers	Header	Equalizer
SC(T)-05	2 - 2"	3"	1-1/2"
SC(T)-06	2 - 2"	4"	1-1/2"
SC(T)-07	2 - 2-1/2"	4"	1-1/2"
SC(T)-08	2 - 2-1/2"	4"	1-1/2"
SC(T)-09	2 - 2-1/2"	4"	2"
SC(T)-10	2 - 2-1/2" and 1 - 2"	4"	2"

## BURNER SPECIFICATIONS

Boiler Model Number	Burners - Oil			Burners - Gas			Burners - Gas/Oil
	Beckett Model No.	Carlin Model No.	Power Flame Model No.	Beckett Model No.	Carlin Model No.	Power Flame Model No.	Power Flame Model No.
SC(T)-05	CF500	201CRD	CR1-O	CG10.1	301GAS	JR15A/CR1-G	CR1-GO
SC(T)-06	CF500	201CRD	CR1-O	CG10.3	301GAS	JR15A/CR1-G	CR1-GO
SC(T)-07	CF800	201CRD	CR1-O	CG10.3	301GAS	JR15A/CR1-G	CR1-GO
SC(T)-08	CF800	201CRD	CR1-O	CG10.4S	301GAS	JR30A/CR1-G	CR1-GO
SC(T)-09	CF800	301CRD	CR1-O	CG10.4S	301GAS	JR30A/CR1-G	CR1-GO
SC(T)-10	CF800	301CRD	CR1-O	CG10.5S	301GAS	JR30A/CR1-G	CR1-GO



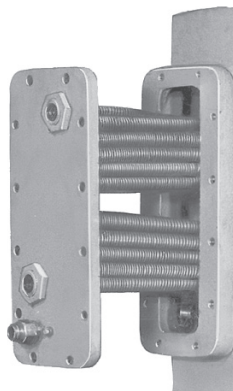
Tankless Copper Water Heater is located in the rear section when installed on a Steam Boiler.

Tankless Copper Water Heater is located in the upper front nipple port when installed on a Hot Water Boiler.

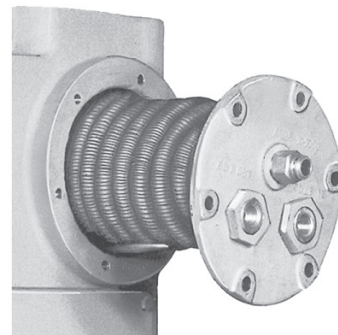
Both Heaters may be installed on a Water Boiler when a greater volume of Domestic Hot Water is desired.

## CONTROL LOCATIONS

Location	Size N.P.T.	Steam	Water
<b>H</b>	3/4"	Low Limit Control	N/A
<b>J</b>	3/4"	Press. Gauge, Oper. Cont. & Limit Cont.	Operating Control
<b>K</b>	3/4"	N/A	Limit Control
<b>L</b>	1/4"	N/A	Theraltimeter
<b>M</b>	1/2"	Gauge Glass & Low Water Cutoff	N/A
<b>N</b>	2"	Return	Optional Return
<b>O</b>	3/4"	Secondary Probe Low Water Cutoff	Secondary Probe Low Water Cutoff
<b>P</b>	3/4" (05-06) 1" (07-10)	Safety Valve	Relief Valve
<b>Q</b>	1-1/4" (05-06) 1-1/2" (07-10)	Return	Return
<b>R</b>	3/4"	Drain Cock	Drain Cock
<b>S</b>	1-1/2"	Skim Tapping & Alternate Safety Valve	Optional High Limit
<b>T</b>	3/4"	Primary Probe Low Water Cutoff	N/A
<b>V</b>	1"	Opt. Float LWCO	Opt. Float LWCO



**HTR X-1082**



**HTR X-1020  
HTR X-1022**

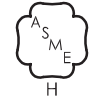
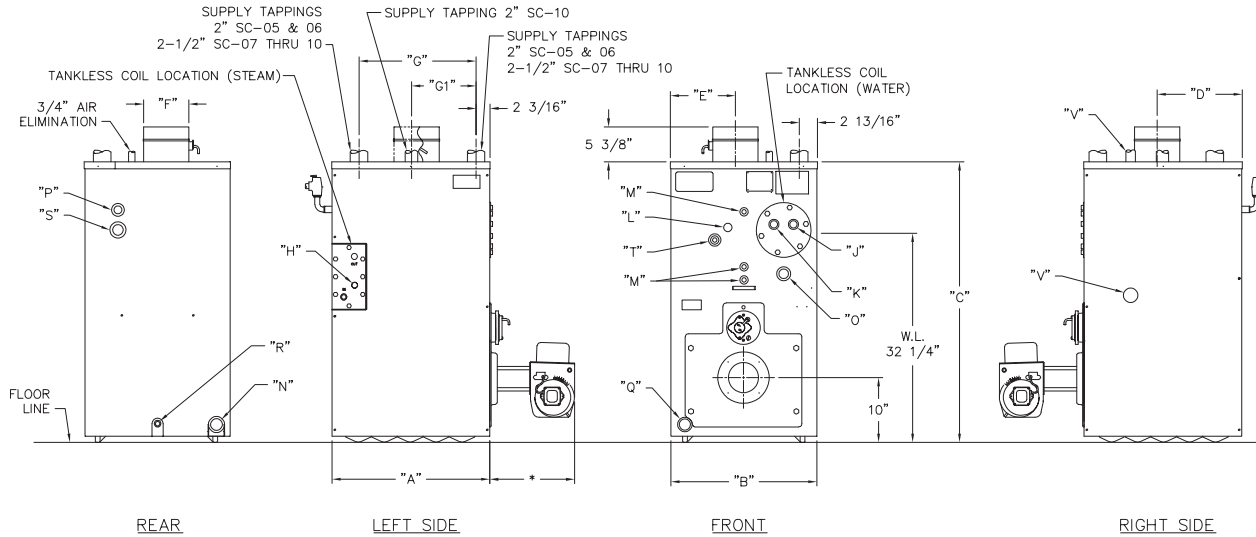
## OPTIONAL TANKLESS DOMESTIC HOT WATER HEATERS

Boiler Model Number	Htr. X-1020 GPM	Htr. X-1022 GPM	Htr. X-1082* GPM (Steam)
<b>SC(T)-05</b>	4.75	—	4.75
<b>SC(T)-06</b>	5.00	—	5.00
<b>SC(T)-07</b>	5.25	—	5.25
<b>SC(T)-08</b>	5.50	10.00	5.50
<b>SC(T)-09</b>	5.75	11.00	5.75
<b>SC(T)-10</b>	6.00	12.00	6.00

\*Optional tankless coil available.

Water heater ratings are based on intermittent demand—40°F to 140°F rise with 200°F boiler water.

# Technical Information



Note: Maximum burner length: Beckett = 13-1/2", Power Flame C = 34", Power Flame J = 24".

## BOILER DIMENSIONS

Boiler Model Number	Jacket Depth "A"	Jacket Width "B"	Jacket Height "C"	Rear of Jacket to c/l of Flue "D"	Left of Jacket to c/l of Flue "E"	Flue Size "F"	Approx. Dist. Between Tappings "G"	Approx. Dist. Between Tappings "G1"
SC(T)-05	24-1/2"	22-1/2"	43-1/4"	13-1/4"	10"	7"	17-7/16"	—
SC(T)-06	28-3/4"	22-1/2"	43-1/4"	15-3/8"	10"	9"	21-5/8"	—
SC(T)-07	33"	22-1/2"	43-1/4"	17-1/2"	10"	9"	25-13/16"	—
SC(T)-08	37-1/4"	22-1/2"	43-1/4"	19-5/8"	10"	9"	30"	—
SC(T)-09	41-1/2"	22-1/2"	43-1/4"	21-3/4"	10"	10"	34-3/16"	—
SC(T)-10	45-3/4"	22-1/2"	43-1/4"	23-7/8"	10"	10"	38-3/8"	17-1/8"

## CARTON DIMENSIONS & SHIPPING WEIGHTS

Boiler Model Number	Approximate Shipping Weight*(lbs.)
SC(T)-05	815
SC(T)-06	910
SC(T)-07	1005
SC(T)-08	1100
SC(T)-09	1195
SC(T)-10	1280

\*Based on Standard Oil Burner

## Series SC™ BOILER RATINGS



Boiler Model Number	Oil Input		Gas Input, MBH	Gross Output, MBH	B2O Input	B2O Gross Output	Oil Net Ratings			Thermal Efficiency, %		Combustion Efficiency, %		Boiler H.P.	Water Content, gal	
	GPH	MBH			MBH	MBH	Steam Sq. Ft.	Water, MBH	Steam, MBH	Oil	Gas	Oil	Gas		Water	Steam
SC(T)-05	2.80	392	404	327	379	308	1,022	284	245	83.4	80.9	85.4	82.8	9.8	26.04	20.40
SC(T)-06	3.50	490	505	409	474	389	1,278	356	307	83.5	81.0	85.4	82.8	12.2	30.36	23.52
SC(T)-07	4.00	560	577	468	542	445	1,463	407	351	83.6	81.1	85.3	82.8	14.0	34.68	26.64
SC(T)-08	4.50	630	649	527	609	500	1,647	458	395	83.6	81.1	85.3	82.8	15.8	39.03	29.76
SC(T)-09	5.00	700	722	586	677	556	1,832	510	440	83.7	81.2	85.3	82.7	17.5	43.32	32.88
SC(T)-10	5.50	770	794	645	745	619	2,016	561	484	83.8	81.2	85.3	82.7	19.3	47.64	36.00

All oil ratings are for models using Type #2 oil unless noted as B2O.

The above ratings are based on 12.75% CO<sub>2</sub> (oil) and +10 in. W.C. at the vent.

The Net Ratings shown include allowance for normal piping and pickup load in accordance with AHRI requirements. Water ratings are based on a piping and pickup allowance factor of 1.15. Steam ratings based on an allowance factor of 1.33. PB Heat should be consulted before selecting a boiler for gravity hot water installations and installations having unusual piping and pickup requirements such as extended piping systems, exposed piping, night set-back, etc. Ratings shown are for elevations up to 2,000 feet. For elevations above 2,000 feet ratings should be reduced at the rate of 4 percent for each 1,000 feet above sea level.

Oil Burner Input is based on G.P.H. with a heating value of 140,000 BTU/gal. Burner Input based on maximum altitude of 2,000 ft.—for other altitudes consult factory.



PeerlessBoilers.com

CUT-SC R5 (08/25-1M)

Printed in U.S.A.

©2025 PB Heat, LLC. All rights reserved

PeerlessBoilers.com



SCAN FOR  
SERIES SC™  
PRODUCT INFO