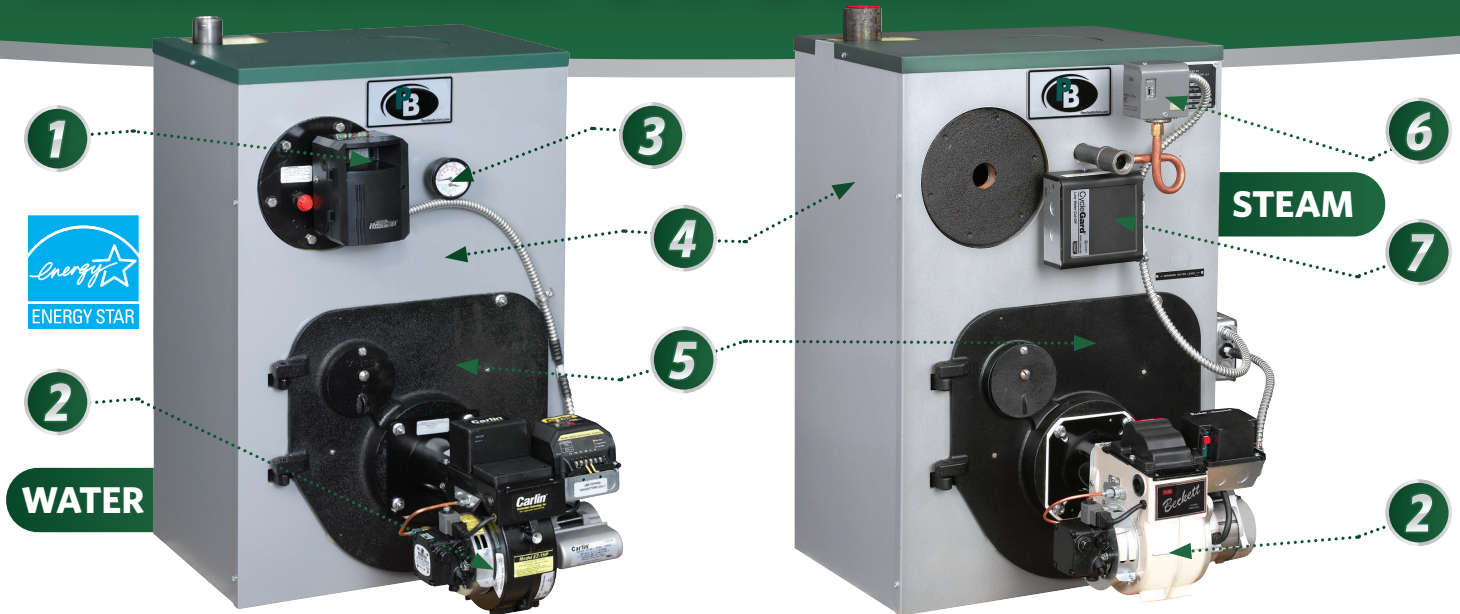


Peerless® Boilers



PeerlessBoilers.com

Series WBV® Residential Oil Boiler



Series WBV® Boiler Features

- ✓ **Up to 87.5% AFUE**
ENERGY STAR® Certified* *certain firing rates
- ✓ **Natural Draft (Chimney) Venting**
- ✓ **High Efficiency, Flame Retention Burners**
Choice of Beckett, Carlin or Riello ②
- ✓ **Certified for Biodiesel Fuel Blends up to 20% (B20)**
- ✓ **Cast Iron Sections** - Factory Tested and Assembled with Steel Push Nipples
- ✓ **Wet Base Section Design**
Ideal for Steam and Hot Water Applications
- ✓ **Rear or Top Flue Convertibility****
- ✓ **Insulated, Deluxe Powder Coated Steel Jacket**
Reduces Boiler Heat Loss ④
- ✓ **Full Plate Swing-Out Door**
For Quick and Easy Cleaning ⑤
- ✓ **Built-in Air Elimination Baffle**
- ✓ **Tankless Coil (Optional Equipment)**

Standard Equipment

**Certain models

- | | | |
|---|--|---|
| ALL <ul style="list-style-type: none">✓ Drain Valve✓ Top Cleanout | WATER <ul style="list-style-type: none">✓ Boiler Reset Control w/ Low Water Cut-off (HydroStat 3250) for Increased Efficiency and Safety ①✓ Taco Circulator**✓ Temperature-Pressure Gauge ③ | STEAM <ul style="list-style-type: none">✓ Probe Type LWCO** ⑦✓ Skim Tapping✓ Pressure Control** ⑥✓ Pressure Gauge |
|---|--|---|

PeerlessBoilers.com

LIMITED
LIFETIME WARRANTY

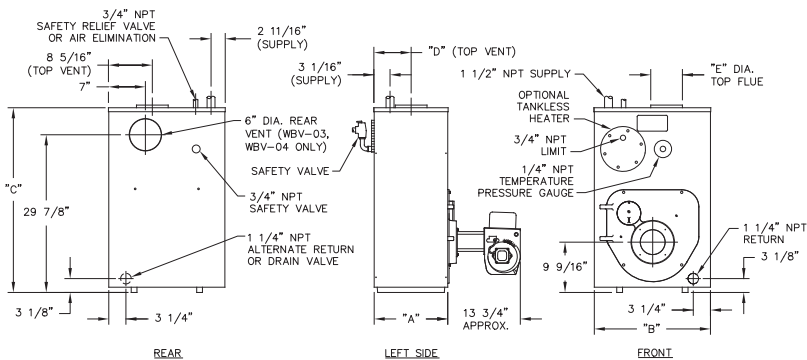
All residential cast iron boilers include a full one-year warranty. A limited, lifetime warranty is provided for the cast iron sections of Peerless® residential hot water boilers. A limited, ten-year warranty is provided on the cast iron sections of residential steam boilers. Visit PeerlessBoilers.com for complete details.



SCAN FOR
SERIES WBV®
PRODUCT INFO

Technical Information

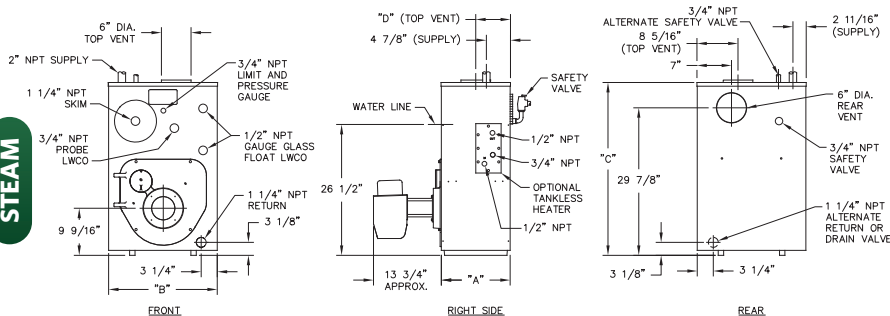
WATER



BOILER DIMENSIONS

Boiler Model Number	Jacket Depth "A"	Jacket Width "B"	Jacket Height "C"	Rear of Jacket to c/l of Vent "D"	Vent Size Diameter "E"
WATER					
WBV-e-03-060/085/105	14-1/8"	22-1/8"	35"	7-1/16"	6"
WBV-e-04-095/125/150	18-1/8"	22-1/8"	35"	9-1/16"	6"
WBV-e-05-175/195	22-1/8"	22-1/8"	35"	11-1/16"	7"
STEAM					
WBV-e-03-085/105	15-3/4"	22-1/8"	35"	8-7/8"	—
WBV-e-04-125/150	19-3/4"	22-1/8"	35"	10-7/8"	—

STEAM



SERIES WBV® BOILER RATINGS - WATER



Boiler Model Number	Input		Heating Capacity ³ MBH		Net Ratings ²		AFUE ³ , %	Water Content	Minimum Stack Draft Required, in. W.C.
	GPH ¹	Oil MBH	B20 MBH	Oil MBH	B20 MBH	Oil MBH			
WBV-e-03-060-W	0.60**	84	N/A	75	N/A	65	87.5*	11.75	-0.03
WBV-e-03-085-W	0.85	119	114	105	94	91	87.1*	11.75	-0.04
WBV-e-03-105-W	1.05	147	143	127	124	110	86.0	11.75	-0.05
WBV-e-04-095-W	0.95*	133	129	117	113	102	87.0*	14.75	-0.03
WBV-e-04-125-W	1.25	175	169	154	147	134	87.1*	14.75	-0.04
WBV-e-04-150-W	1.50	210	203	183	176	159	86.1	14.75	-0.05
WBV-e-05-175-W [†]	1.75	245	237	214	200	186	86.6	17.75	-0.05
WBV-e-05-195-W [†]	1.95	273	269	237	220	206	86.1	17.75	-0.06

NOTE: all values are for Type #2 oil unless noted as B20.

* As an ENERGY STAR® Partner, PB Heat, LLC has determined that these firing rates meet the ENERGY STAR guidelines for energy efficiency.

† Top venting only.

♦ Nozzles for these firing rates not provided as standard equipment. Consult Factory for price and availability.

♦ This firing rate can only be achieved with a Riello F-3 burner. See Installation, Operation and Maintenance Manual.

1 Burner input based on No. 2 fuel oil with a heating value of 140,000 Btu per gallon.

2 Net water ratings based on an allowance of 1.15. Consult Factory before selecting a boiler for installations having unusual piping and pickup requirements, such as intermittent system operation, extensive piping systems, etc.

3 Heating Capacity and Annual Fuel Utilization Efficiency (AFUE) ratings are based on U.S. Government tests. Chimney Size: 8" x 8" x 15 ft.

SERIES WBV® BOILER RATINGS - STEAM



Boiler Model Number	Input		Heating Capacity ³ MBH		Net Ratings ²		AFUE ³ , %	Water Content	Minimum Stack Draft Required, in. W.C.
	GPH ¹	Oil MBH	B20 MBH	Oil MBH	B20 MBH	Steam Sq. Ft.			
WBV-e-03-085-S	0.85	119	114	104	93	325	78	85.6	-0.04
WBV-e-03-105-S	1.05	147	142	127	124	396	95	85.0	-0.05
WBV-e-04-125-S	1.25	175	169	152	145	475	114	85.6	-0.04
WBV-e-04-150-S	1.50	210	203	180	173	563	135	85.0	-0.05

NOTE: all values are for Type #2 oil unless noted as B20.

1 Burner input based on No. 2 fuel oil with a heating value of 140,000 Btu per gallon.

2 Net steam ratings based on an allowance of 1.333. Consult Factory before selecting a boiler for installations having unusual piping and pickup requirements, such as intermittent system operation, extensive piping systems, etc.

3 Heating Capacity and Annual Fuel Utilization Efficiency (AFUE) ratings are based on U.S. Government tests. Chimney Size: 8" x 8" x 15 ft.



PeerlessBoilers.com

CUT-WBV R7 (08/25 - 1M)
Printed in U.S.A.
©2025 PB Heat, LLC. All rights reserved.



SCAN FOR
SERIES WBV®
PRODUCT INFO